



PRIDEVILLE

EVERY ACRE OF PRIDE

RERA Registration No: UPRERAPRJ545875

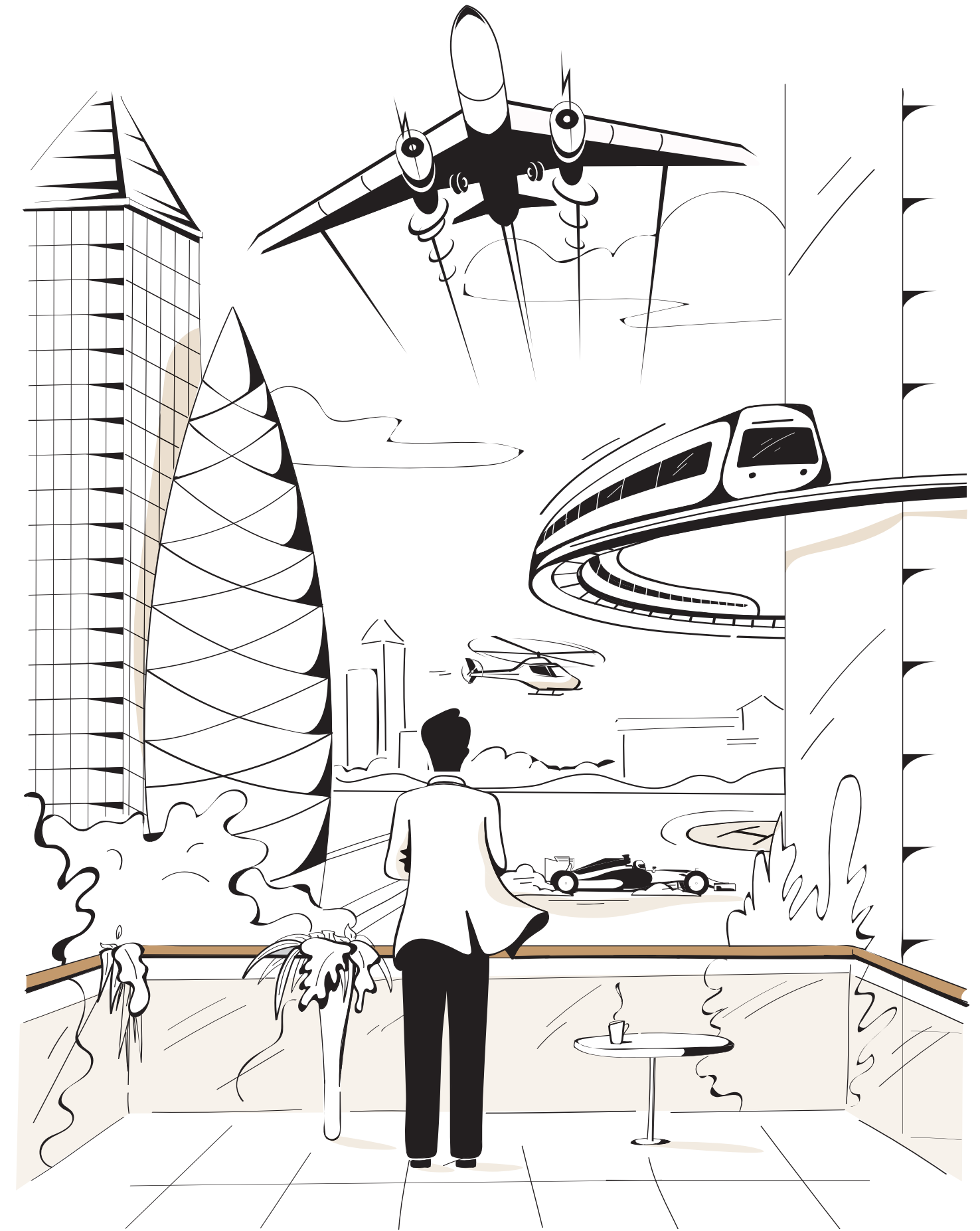
Imperia Structures Ltd.

Corp. Office: A-25, Mohan Co-operative Industrial Estate, New Delhi 110044

www.imperiastructures.com | response@imperiastructures.com

Site Office: Prideville, Plot No. A-5, Sector-25, SDZ, Sports City, Yamuna Expressway (UP)

Branch Office: Noida | Patna | Lucknow | Ranchi | Gurugram | Chandigarh



**IMPERIA BRINGS TO YOU,
THE GREATER NOIDA OF THE FUTURE.**

The 'greater' part of any location is often about getting away from the humdrum of the central city, to a well-connected yet peaceful and pollution-free suburb. For Delhi NCR, it would mean GREATER NOIDA, the fast emerging extension of the capital city – the most well-planned part of Delhi NCR having world-class infrastructure and multitudes of residential, commercial, education and entertainment hubs.

A city that:

- is just 25 minutes from South Delhi, and 90 minutes from Agra.
- is already connected by the Taj Expressway, the Faridabad-Noida-Ghaziabad (FNG) Expressway and Kundli-Manesar- Palwal (KMP) Expressway.
- already has several residential complexes, malls, hotels, super-speciality hospitals and educational campuses.
- has 2500 acres earmarked for the Logistics, IT/ITes and Manufacturing Hub.
- is next to India's first Exposition Mart for Cottage and Handicraft Industry.
- is part of the first phase of Yamuna Expressway Master Plan (YEMP) which includes 22% area for green cover, 20% for Industrial Development, 19% for Residential Development, 15% for Transport Links, and 24% for Commercial and Institutional Development.

But that's just Greater Noida. It's time you experienced the **GREATEST NOIDA, with Imperia's new residential project - **Prideville**.**

WELCOME TO GREATEST NOIDA



THE NEW CROWN JEWEL OF DELHI NCR

The upcoming Jewar International Airport, just 20 minutes away, is already proving to be a catalyst of growth for the entire Yamuna Expressway region:

- 2.30 lakh hectare Yamuna Expressway region is divided into 23 Residential, Industrial, Commercial, and Institutional zones
- Jewar Airport and Aviation hub sprawling over 8000 hectares
- Defence Industrial Corridor, Textile Park, and Film City covering 3500 hectares
- 4500 hectares allocated for residential development
- 1275 hectares reserved for commercial development
- Over 50,000 hectares reserved for green belt
- ₹6000 crore mega food park spread over 425 acres by Patanjali Group
- Multi-modal Logistics Park by Adani Group in 2500 acres
- Adani Group to also invest ₹5000 crore in a world-class university



Connected by world's largest Metro network

Few minutes from higher education institutes- Galgotias University, Noida International University, Gautam Buddha University, IIMT, NILM, Sharda University and Amity Business School



Several International Schools for your young ones



Convenience stores and Grocery marts in the neighbourhood

Multiple Super Speciality Hospitals with Medi-vac facilities



In proximity to a Disney World-styled Amusement Park

Cafes and Fine Dining Restaurants all around

Close to premium shopping malls and retail hubs



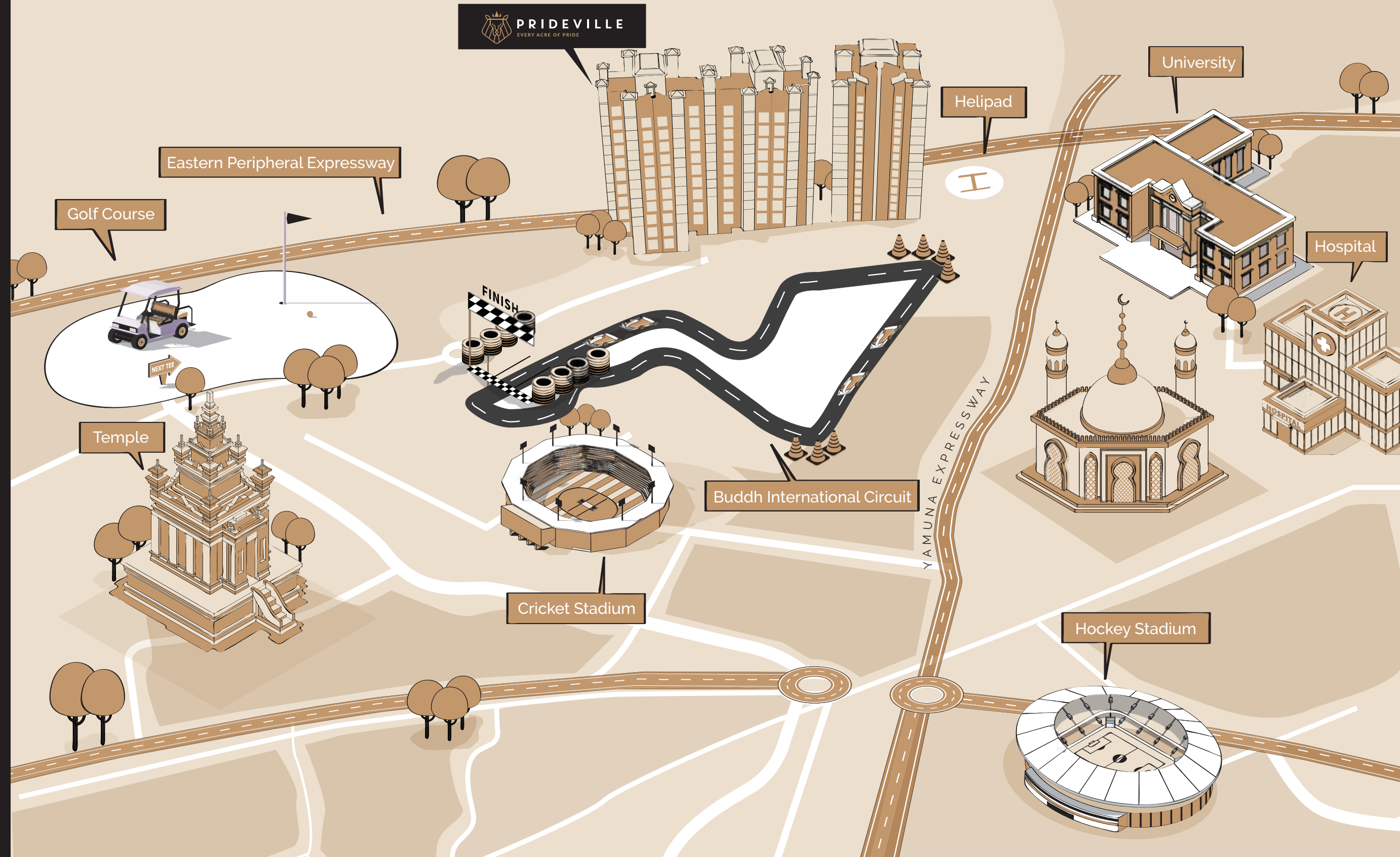
Minutes away from upcoming Night Safari, Film City, and Sports Academy

Over 10 Lakh Jobs to be created in the near future



WELCOME TO INDIA'S FIRST PLANNED OLYMPIC SPORTS CITY ON TAJ EXPRESSWAY

Just 20 minutes away from the upcoming Jewar International Airport, Prideville is nestled in the midst of a pulsating 5000 acre Sports City located on the Yamuna Expressway in Delhi NCR. It is not only India's first planned development aimed for sports and an active life, it's now gearing up to be India's first Olympic Sports City with a host of international sporting arenas at one place.



5000 ACRES OF PASSION AND PRIDE

- Buddh International F1 Circuit
- International Cricket Stadium
- International Hockey Stadium
- Helipad

- 18-Hole Golf Course
- Go-karting Tracks
- Indoor stadiums for Hockey, Kabaddi, and Football

IMPERIA
PRESENTS



PRIDEVILLE
EVERY ACRE OF PRIDE

LIVE THE GREATEST LIFE

Imagine waking up to the view of India's only F1 track and later going for a night safari, just minutes away. Spend an evening with your loved ones enchanting your senses on a 14 km long tree-lined Boulevard of Life dotted with cafes, lakes and cultural attractions. And don't you forget to take out some time for the lively community gatherings to rejuvenate yourself.

In addition to all this, experience the convenience of living close to the airport, the railway station, and the metro. Come to Prideville. And live the greatest life.

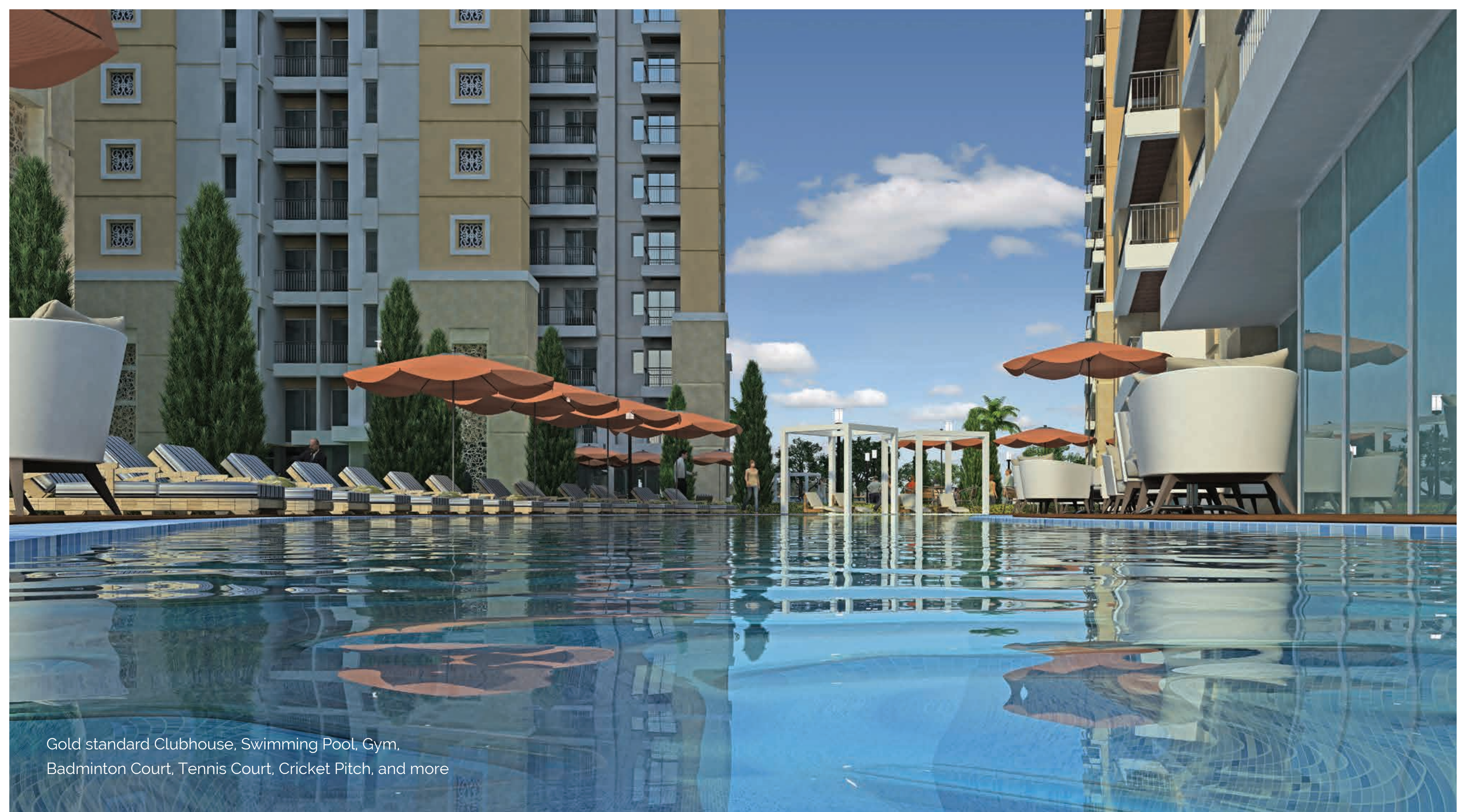
THE PRIDE OF HAVING A PLACE YOU CAN CALL YOUR OWN

There's nothing comparable to the pride of having a space you can call your own. Even more, when it's a home at Prideville.

Prideville brings you six stilt+14 storeyed premium residential towers spread across 3.9 acres, offering all the amenities needed for a modern lifestyle. It's the closest you can get to owning pride for a lifetime.

- 1 BHK (710 Sq.ft.) and 2 BHK (900 & 1050 sq.ft.) premium apartments
- Largest-in-segment living spaces
- Naturally well-lit bedrooms, spacious kitchens and well-appointed bathrooms
- Landscaped theme gardens with Yoga and Meditation Lawn
- Right next to an operational Helipad and facing Buddh F1 Circuit



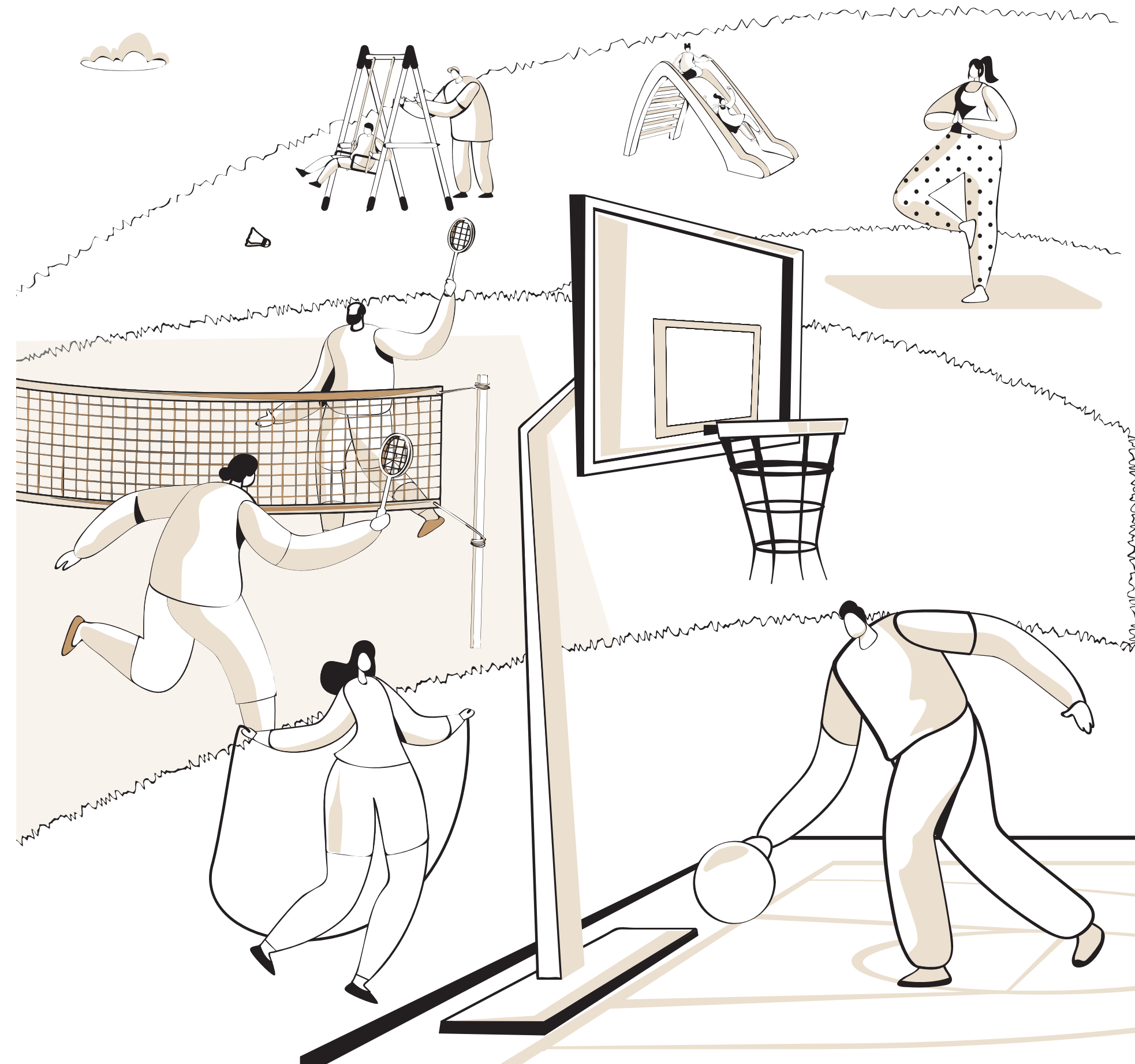


Gold standard Clubhouse, Swimming Pool, Gym,
Badminton Court, Tennis Court, Cricket Pitch, and more

EXPERIENCE GREATEST AMENITIES

State-of-the-art health and sports facilities that will inspire a fit and active lifestyle for the entire family.

- Cricket Pitch, Badminton Court
- Kids Tennis Court, Kids Play Area, Sand Pit
- Peace Garden, Pebble Garden, Chess Garden, Elderly Park
- Yoga & Meditation Lawn
- Paved Plaza, Fitness Court, Reflexology, Multipurpose Lawn



EXPERIENCE GREATEST LUXURIES

Adding to the greatness of Prideville are a host of modern luxuries within its complex.

- A luxurious gold standard Clubhouse with Reception, Lounge, Gym, and Yoga Centre
- Cascade Swimming Pool with Changing Rooms, Massage Room, Spa & Sauna, Cabanas, Deck, Salon
- Activity zone with Table Tennis, Billiards, Cards Room, Kids Zone
- Coffee Shop, Banquet & Kitchen



EXPERIENCE GREATEST AMBIENCE

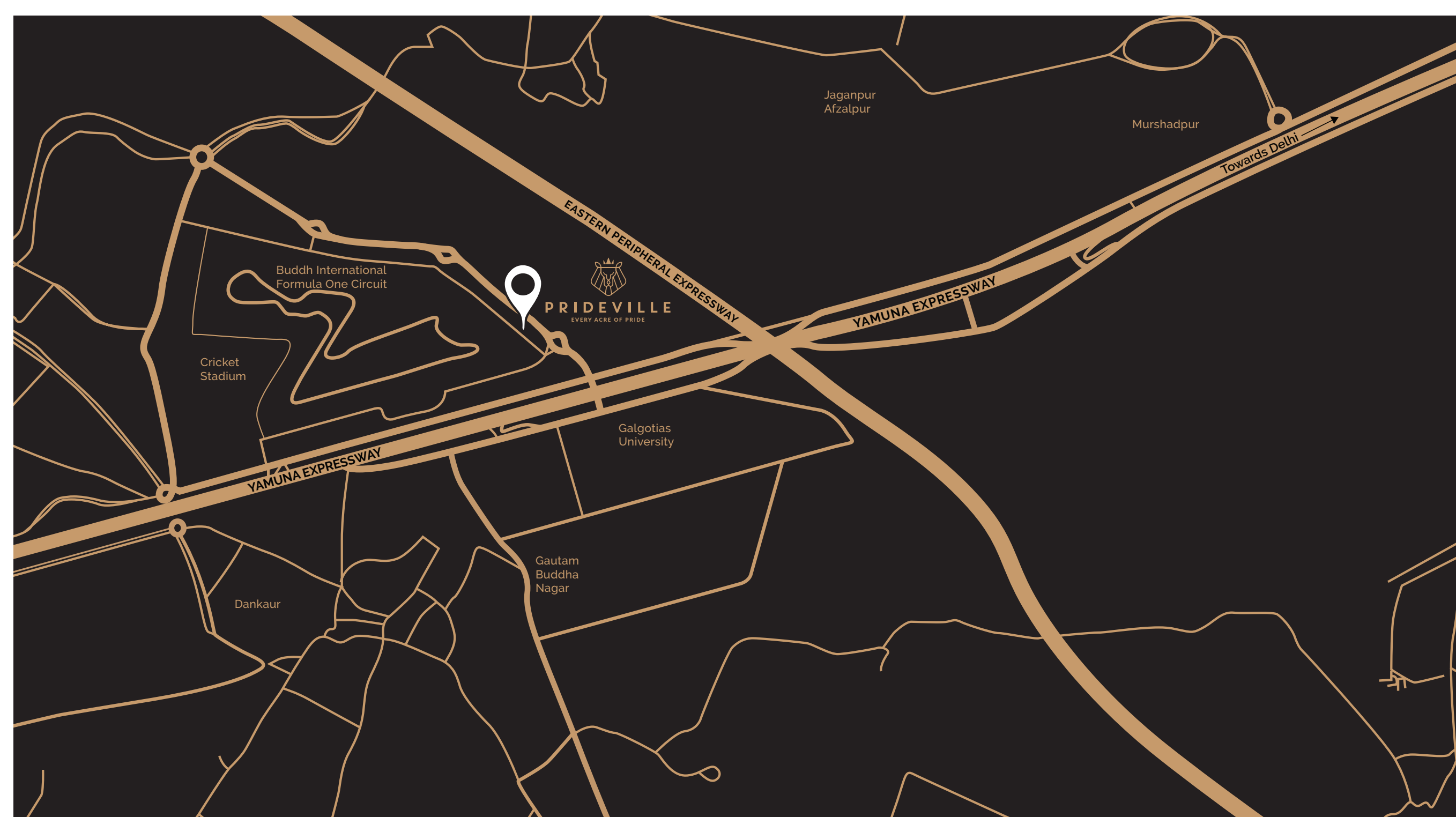
In addition to the world-class amenities in the Sports City,
you can experience a blissful neighbourhood:

- 14 km long tree-lined Boulevard of Life
- Manmade lakes, cafes and cultural attractions
- Over 300 acres reserved for flower farm, recreational centres,
community gatherings, theme gardens and more...



EXPERIENCE
GREATEST
CONNECTIVITY





BUSINESS. LEISURE. HERITAGE.

ALL TRIPS ARE JUST A SHORT DRIVE AWAY.

Located right opposite the Galgotias University, Noida International, Gautam Buddha University, and facing the Buddh F1 circuit, a home at Prideville will always keep you connected with the best of today and the greatest of tomorrow. A home here is bound to be your happy place, and the epicentre of your child's bright future.

- 2 minutes from proposed Metro Station
- 9 minutes drive from Pari Chowk
- 10 minutes drive to upcoming Night Safari

20 minutes to Akshardham



30 minutes to Central Delhi



60 minutes to Mathura-Vrindavan



90 minutes to Taj Mahal



4 hours to Gwalior



4.5 hours to Mussoorie



4.5 hours to Jim Corbett National Park



5 hours to Lucknow





Creating
#TheImperiaEffect
since 1985

At Imperia, we have a simple purpose - to bring a smile to your face, come what may. And it is this smile that inspires us day after day to deliver our best with homes, offices, malls, and commercial spaces that are not just four walls of security but acres of joy. And we have proof. For 35 years, we have created some of the finest landmarks in Delhi NCR. These structures are home to thousands of families, business hubs for many a corporate, and the reasons of happiness for everyone who has been touched by us.

With our non-negotiable assurance of quality, promise of timely deliveries, and empathy for your way of life, we have created a new kind of joy, a new feeling, a new raison d'etre to be a part of us.

We are here to create #TheImperiaEffect. Have you felt it as yet?

THE LEGACY OF FULFILLING OUR PROMISES

Imperia Structures Ltd. is a 35 year old company that has **delivered over 25 residential and commercial projects** across Delhi NCR and continues to scale new milestones every day. Here are some of our on-going projects.

MindSpace Golf Course Extension Road, Gurugram

An office complex shaped to give entrepreneurs the head-start they need. Mindspace benefits from its premium location in heart of Gurugram Central Business District. The project is at an advanced stage of construction.



The Esfera Sec. 37c, Gurugram-Dwarka Expressway

An eternal paradigm of flawless workmanship and impeccable planning. The Esfera is one of the finest in contemporary residences. Spread over a sprawling 17 acres (68,797 sq.mts.). The Esfera redefines style and elegance with its aesthetic design and grandeur.

H2O Retail K.P.V, Greater Noida West

One-stop shopping and entertainment destination, H2O Retail is a highstreet mall lined up with luxury retail outlets, adrenaline-boosting adventure sports, and a grand assortment of ambient exhibits. Over 200 retail outlets are ready for fit-outs.



H2O Offices K.P.V, Greater Noida West

Step into a world that magnifies your every hope, dream and aspiration. Imperia H2O, located in the largest office hub of NCR-Knowledge Park V, Greater Noida West, offers an office environment you will enjoy walking in day after day with its state-of-the-art facilities that help you climb the corporate ladder effortlessly.

SUCCESSFUL RELATIONSHIPS THAT FILL US WITH PRIDE

The only relationships we believe in building are the ones where a mutually beneficial long-term commitment is a pre-requisite. And this belief has stood us in good stead.

- Imperia engages leading architectural design firms for each of its projects.



- Imperia enjoys confidence of a coveted diaspora of financial institutions and investors.



- We have successfully leased over 2 million sq. ft. of commercial space to leading MNCs and Fortune 500 companies.

