

**LOCATION MAP**



SCAN QR CODE  
For Virtual Tour



Imperia Structures Ltd.

Corp. Office: A-25, Mohan Co-operative Industrial Estate, New Delhi-110044 | E: response@imperiastructures.com | W: www.imperiastructures.com

Site Office: Prideville, Yamuna Expressway, Sports City, Opposite Buddh International Circuit Branch Offices: Gurugram | Noida | Patna | Lucknow

\*Terms & Conditions apply. All images are conceptual only and subject to change without prior notice. 1sq.mtr. = 10.764 sq.ft. | Valid from 18th Oct, 2021.



IMPERIA PRESENTS,  
THE GREATER NOIDA OF THE FUTURE.

WELCOME TO

**GREATEST NOIDA**

**INVEST ONLY ₹ 37 LAKHS\* AND GET**

**₹ 37,000\* PER MONTH RENTAL**

\*T&C APPLY

# 1/2/4 BHK

## Residential Apartments

Yamuna Expressway, Sports City,  
Opposite Buddh International Circuit



THE WORLD AT AN  
**ARM'S LENGTH**



- Facing the Buddh international F1 track
- At the cusp of 3 Expressways
- Opposite Gautam Buddha University
- 20 minutes from the upcoming Jewar International Airport
- 2 minutes from proposed metro station



AN ODE TO  
**THE ADRENALINE**



- Right Next To Asia's Largest International Cricket Stadium
- Bang Opposite To The Only F1 Track In India
- Hockey Stadium And Sports Academy



# RELAX AND REJUVENATE



- Two Luxurious Swimming Pool & Club house
- Spa and Sauna, Massage Room
- Salon ,Deck, Cabanas Banquet & Kitchen
- Kids Play Area



STATE-OF-THE-ART HEALTH AND  
**SPORTS FACILITIES**



- Elderly Park , Peace Garden , Pebble Garden, Chess Garden, Sand Pit
- Multipurpose Lawn
- Paved Plaza, Reflexology, Yoga and Meditation Lawn
- Badminton Court , Tennis Court , Fitness Centre , Cricket Nets, Tot Lots



IN MIDST OF A  
**GREEN PARADISE**

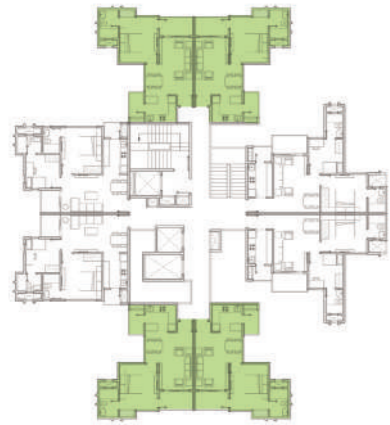


- 15.7 km long tree-lined Boulevard of Life
- Landscape Greens & Lakes
- Dedicated Jogging Track, Bicycle Track
- Flower Farm, Recreational Centres, community gatherings, Theme Gardens



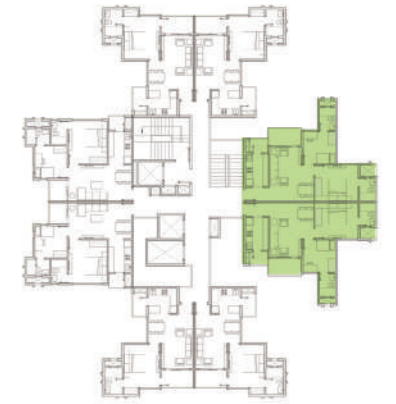
## 1 BHK

Sale Area : 710 Sq. Ft. (65.961 Sq. Mtr.)



## 2 BHK ( TYPE - B)

Sale Area : 900 Sq. Ft. ( 83.612 Sq. Mtr)



## 2 BHK ( TYPE - A)

Sale Area : 900 Sq. Ft. ( 83.612 Sq. Mtr.)



## 2 BHK ( TYPE - C)

Sale Area : 1050 Sq. Ft. ( 97.547 Sq. Mtr.)







## 2 BHK ( TYPE - D )

Sale Area : 1050 Sq. Ft. ( 97.547 Sq. Mtr. )



## 4 BHK

Sale Area : 2200 Sq. Ft. ( 204.4 Sq. Mtr. )



## 2 BHK ( TYPE - E )

Sale Area : 1050 Sq. Ft. ( 97.547 Sq. Mtr. )



# SITE PLAN

## PENTHOUSE UNIT

Sale Area : 4000 Sq. Ft.



UPPER FLOOR



LOWER FLOOR



710 SQ.FT 1BHK

900 SQ.FT 2BHK Type A,B

1050 SQ.FT 2BHK Type C, D, E

2200 SQ.FT 4BHK

## AMENITIES:

- |                        |                          |                        |
|------------------------|--------------------------|------------------------|
| 1. Site Entry 1        | 11. Deck 2               | 21. Pebble Garden      |
| 2. Site Entry/Exit 2   | 12. Cabanas              | 22. Elderly Park       |
| 3. Security Check Post | 13. Club 1 & 2           | 23. Fitness Court      |
| 4. Basement Ramp       | 14. Basketball Court     | 24. Jogging Track      |
| 5. Parking             | 15. Kids Play Area       | 25. Leisure Garden     |
| 6. Multipurpose Lawn   | 16. Sand Pit             | 26. Chess Board        |
| 7. Badminton Court     | 17. Tot Lots             | 27. Reflexology Garden |
| 8. Swimming Pool 1     | 18. Yoga/Meditation Lawn | 28. Services           |
| 9. Swimming Pool 2     | 19. Seating Garden       |                        |
| 10. Deck 1             | 20. Peace Garden         |                        |



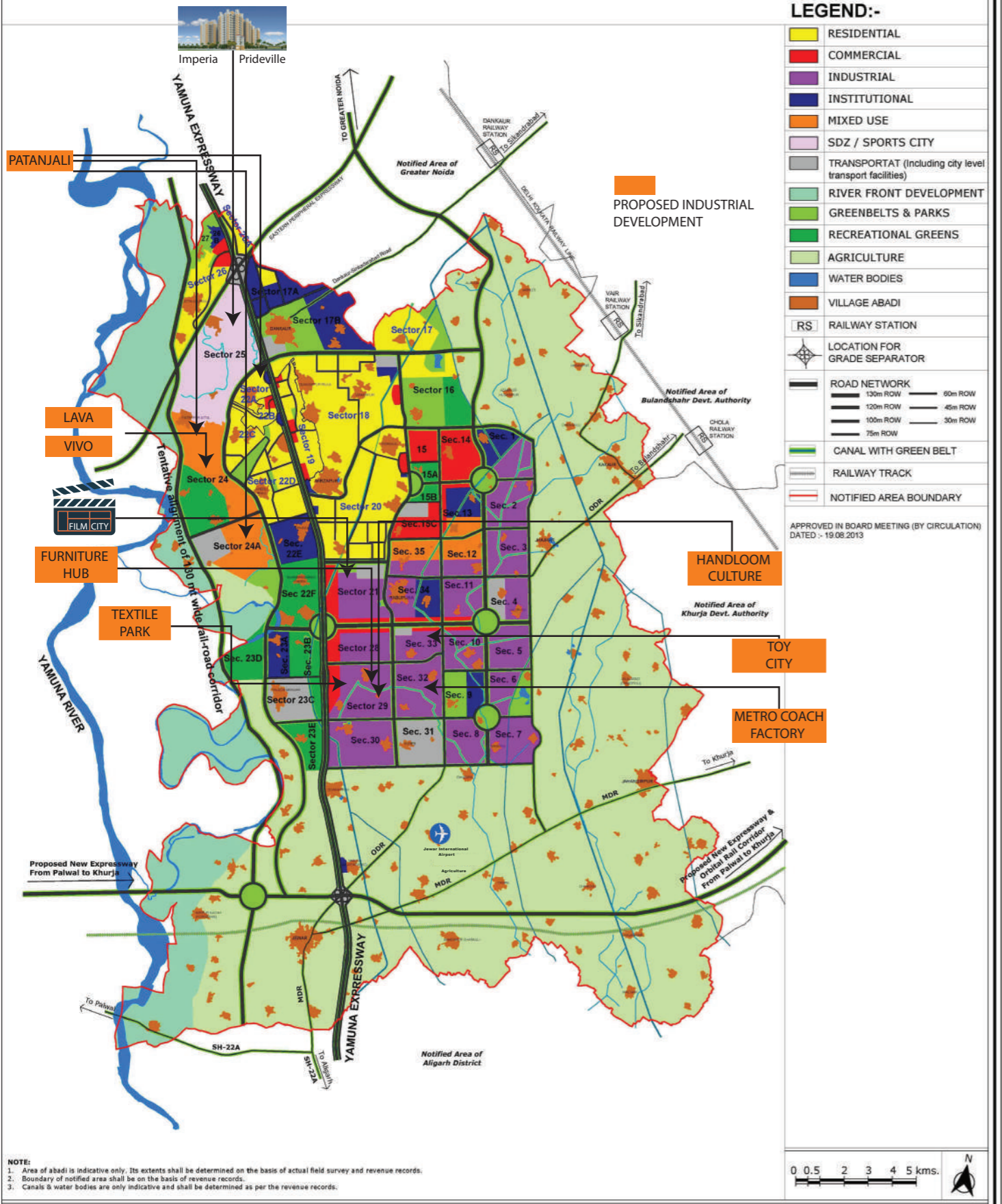
# SPECIFICATIONS

1. Flooring details of various parts of the house	Tiles
2. Wall finishing details	Oil Bound Distemper
3. Kitchen details	Oil Bound Distemper/Dado 1' above counter
4. Bathrooms fittings	ISI Marked CP fittings, W.C & /washbasin
5. Doors and window frames (mention material to be used for finishing)	Doors with wooden frame. Windows- Al powder coated/MS Sections
6. Glass works	4-5 mm annealed glass
7. Electrical fittings	ISI marked switches & sockets
8. Conduiting and wiring details	Copper wiring in concealed conduits
9. Water storage	Over Head Tanks

10. Lift details	As per ISI standards
11. External glazing	A1 powder coated/aluminium/upvc/ms with 4-5 mm annealed ISI marked glass
11.5. Windows/ glazing	A1 powder coated/aluminium/upvc/ms with 4-5 mm annealed ISI marked glass
12. Doors	—
12.1. Main door	Both side laminated flush door
12.2. Main door	Flush doors (Painted both side)
13. Electrical fittings	As mentioned in point No 8 above.
14. External finishing / Colour scheme	External Grade Paint
15. Internal finishing	Oil bound distemper

# MASTER PLAN FOR YAMUNA EXPRESSWAY INDUSTRIAL DEVELOPMENT AREA (PHASE - I) - 2031

(For Notified Area of GautamBudh Nagar & Bulandshahr District)



**NOTE:**  
 1. Area of abadi is indicative only. Its extents shall be determined on the basis of actual field survey and revenue records.  
 2. Boundary of notified area shall be on the basis of revenue records.  
 3. Canals & water bodies are only indicative and shall be determined as per the revenue records.

**YAMUNA EXPRESSWAY INDUSTRIAL DEVELOPMENT AUTHORITY** **TITLE : Master Plan**



At Imperia Group, we believe in dreams, and turning them into a stunning reality. We have been a part of the incredible transformation that changed the real estate landscape of Delhi NCR. Be it commercial, office, residential or retail, we have created archetypes of excellence in every space.

Building a legacy of delivery, the group has completed over 35 years. In these years, we have set new benchmarks in quality and time delivery - with over 23 projects delivered and almost 2 million sq. ft. of commercial space leased out to Fortune 500 companies including the topmost IT, manufacturing, banking and consultancy services. Some of our prestigious clients include names like Citibank, Reliance, Siemens, Diesel, Samsung, Larsen and Toubro, Videocon, Blue Star, Gati, PVR, Sony Maharaaja Whiteline, Legrand, Max Bupa Life Insurance, GE Money, Flipkart, Snapdeal, Amazon, Airtel, Kotak, ICICI and Tata Consultancy Services among others.

## OUR PROJECTS



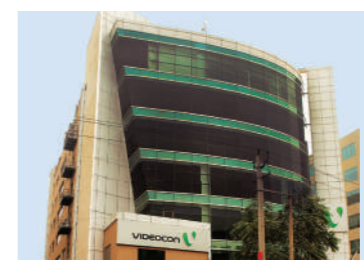
H20-RESIDENCY, GR. NOIDA WEST



SECTOR 37C, GURGAON DWARKA EXPRESSWAY



A-28, MATHURA ROAD



A-248, GURUGRAM



A-18, MATHURA ROAD



PLOT No. 7, SECTOR 125 NOIDA



A-25, MATHURA ROAD



JAYPEE SPORTS CITY, YAMUNA EXPRESSWAY, GREATER NOIDA



KNOWLEDGE PARK V, GREATER NOIDA WEST



KNOWLEDGE PARK V, GREATER NOIDA WEST



SECTOR 62, GOLF COURSE EXTENSION ROAD, GURGAON

SOME OF THE 23 PROJECTS DELIVERED